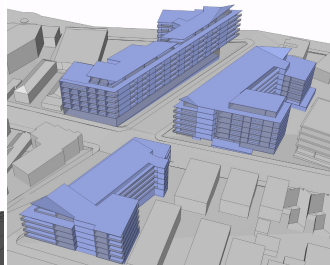
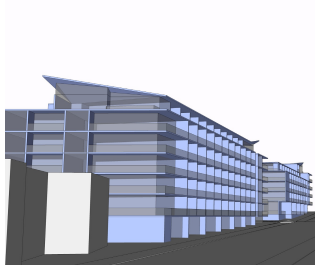


Club Profile

Petersham RSL Club - Redevelopment

Location	7 Regent Street, Petersham NSW
Value	\$120M
Area	Club - 4,500m ² Retail/Commercial – 500 m ² Carpark – 460 cars Residential – 270 apartments
Developer	Petersham RSL Club
Architect	Jackson Teece Architects Pty Ltd
Builder	N/A
Status	Planning analysis



About

In addition to the club premises, Petersham RSL has two additional sites in Regent Street which are being used for car parking as the current club has limited on site car parking facilities.

A new Local Environmental Plan went on exhibition in 2010 and Club Innovations then liaised with, and prepared submissions to Council regarding the proposed revised LEP to ensure that the Club could maximize development potential from the site that it owned. The LEP has now been gazetted, and it allows a variety of uses across the three sites, that includes registered club, residential and retail/commercial.

The current concept proposal is to construct a new club on one of the two vacant sites with basement car parking and commercial and residential over and then once the new club has relocated to this site, to redevelop the existing club premises and the other vacant club owned site with retail/commercial at ground level and residential over